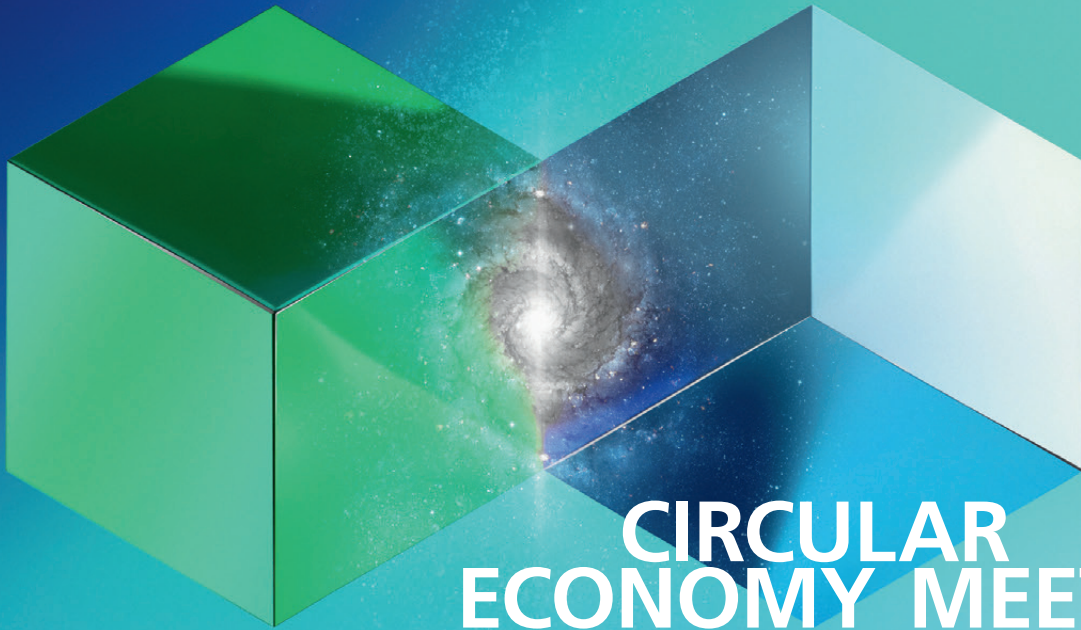


**SCHÜTZ**

# news



## CIRCULAR ECONOMY MEETS TECHNOLOGY

8

PACKAGING SYSTEMS

### CIRCULAR ONE

- SCHÜTZ's new, all-in-one solution for highly efficient packaging cycles



SPECIAL ISSUE  
interpack 2026

# Contents

## PACKAGING SYSTEMS

- 4 Packaging innovations **for maximum efficiency in the packaging cycle**
- 8 **CircularOne:** SCHÜTZ's new, all-in-one solution for highly efficient packaging cycles
- 16 Circular Economy meets Technology: **Consistently expanding our global presence**
- 20 More variety, more flexibility: **SCHÜTZ is strategically expanding its jerrycan range**
- 24 Contamination-free, sustainable, efficient: **The SCHÜTZ IMPELLER homogenises viscous products in closed IBCs**
- 28 Optimal force distribution, designed for automated logistics: **3-skid steel pallet goes into series production**
- 30 **Better protection during forklift operation:** a new composite solution for steel pallet bottom groups
- 32 Double fire protection, easy handling: **our new IBC for sensitive products**
- 34 **A systematic approach to steel:** Efficient load securing and a wide choice of steel drums for challenging contents
- 38 Proven millions of times, continuously developed: **GREEN LAYER technology for all plastic packaging**
- 42 **On-Site, just in time:** SCHÜTZ invests in a state-of-the-art IBC production facility at BASF's main plant

## 4

Circular Economy meets Technology: At the world's leading trade fair in Düsseldorf, discover how SCHÜTZ uses innovative technologies and services to deliver efficient circular economy solutions for IBCs, drums and jerrycans.



## 20

With optimised geometries and a 6-layer construction, the new SC2 series offers maximum flexibility for the specific market requirements in Europe and North America.



## 30

Greater durability thanks to an optimised bottom group: innovative locking tabs in the bottom plate and corner feet prevent deformation and extend the service life of the pallets, enabling more cycles within the circular system.





## CIRCULAR ECONOMY MEETS TECHNOLOGY

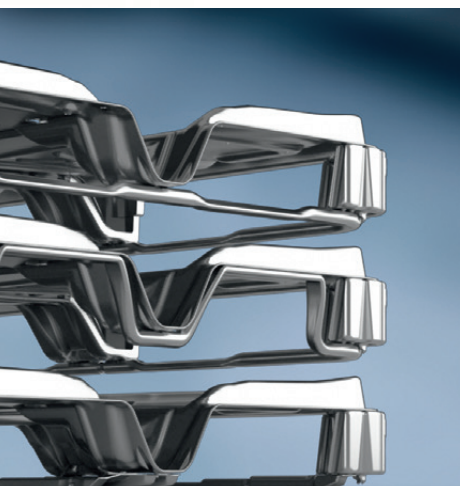
### 8

Benefit from the CircularOne platform, an efficient all-round service that seamlessly combines collection, reconditioning and supply for your industrial packaging.



### 16

Sustainable logistics worldwide: our growing network offers local solutions and an optimised carbon footprint across the entire packaging lifecycle.



#### IMPRINT

Editor: Schütz GmbH & Co. KGaA  
Schützstraße 12, D-56242 Selters  
Phone: +49 2626 77 0, E-mail: [info1@schuetz.net](mailto:info1@schuetz.net)  
[www.schuetz.net](http://www.schuetz.net)

Editorial office: Schütz Corporate Marketing (Veit Enders, Melanie Ievoli)

Text: additiv pr GmbH & Co. KG (Marius Schenkelberg), [www.additiv-pr.de](http://www.additiv-pr.de)

Design: Bauch & Müller Werbeagentur GmbH, [www.bauch-mueller.de](http://www.bauch-mueller.de)

Print: Druckerei Hachenburg PMS GmbH, [www.druckerei-hachenburg.de](http://www.druckerei-hachenburg.de)

Picture copyright: [www.shutterstock.com](http://www.shutterstock.com), BASF SE

# Packaging innovations for maximum efficiency in the packaging cycle

Every three years, when interpack opens its doors, Düsseldorf becomes the main meeting place for the international packaging industry. As the world's largest trade fair and the most important platform for innovation, technology and industry dialogue on packaging and related subjects, interpack is much more than just an exhibition for SCHÜTZ: it is an opportunity to bring packaging solutions to life, gather feedback from users and jointly develop solutions for the challenges of tomorrow. This year, our stand is themed "Circular Economy meets Technology". Behind this lies a clear and sustainable approach: you need state-of-the-art technology in order to implement the circular economy comprehensively and with true efficiency. We'll be demonstrating how this works in practice with numerous innovations in the fields of IBCs, drums, jerrycans and services.

**F**or SCHÜTZ, economic success and environmental benefits have never been mutually exclusive. In any truly effective technical solution, they are two sides of the same coin. This approach shapes the entire SCHÜTZ portfolio and it is reflected in our guiding motto for interpack 2026. Our global solutions stand for the highest quality and uncompromising safety.

At this year's trade fair, we are bringing this philosophy to life under the motto "Circular Economy Meets Technology". We are guided by four key principles to achieve maximum efficiency for our customers.

## **CIRCULAR BY DESIGN**

**Experience shows that if you want to make packaging sustainable, you cannot reduce it to individual aspects.**

**With a commitment to maximum efficiency, technological excellence and a genuine circular economy, we manage the entire life cycle of our industrial packaging – from development and manufacture right through to collection and reconditioning.**



# CIRCULAR ECONOMY MEETS TECHNOLOGY

Whilst the use of recycled materials significantly improves the environmental footprint, it must never be at the expense of safety and performance. This is why we view our packaging as comprehensive solutions and embed the circular principle deeply into their development. From the outset, they are uncompromisingly designed for true circularity.



## interpack

PROCESSING & PACKAGING  
7 TO 13 MAY 2026  
DÜSSELDORF

HALL 10 | BOOTH D22 | E34

With currently more than 80 production and service locations, we guarantee our customers absolute supply security and maximum flexibility around the globe.

## GLOBAL COMMITMENT

Through ongoing investment and the strategic integration of new partners, we are continually strengthening our global presence. With currently more than 80 production and service locations, we guarantee our customers absolute supply security and maximum flexibility around the globe.



## ENGINEERED FOR EXCELLENCE

This guiding principle sums up our technical cornerstones, where comprehensive expertise and the close integration of production and product know-how work seamlessly together. Our extensive in-house manufacturing capabilities, encompassing our own tool, machine and plant engineering, together with our technological leadership in multi-layer extrusion blow-moulding, ensure global quality standards.

## GLOBAL COMMITMENT

A strong infrastructure is essential to keep transport distances short, use resources efficiently and consistently close material loops worldwide. That is why we are continuously driving forward the expansion of the SCHÜTZ network.

## CLOSING THE LOOP TOGETHER

We work with our customers to design highly efficient packaging cycles – from supply to global collection and reconditioning right through to recycling – entirely within our own network. This guarantees full process control, consistently high quality standards and absolute supply security. To achieve these aims we have brought our integrated approach together in our new circular economy offering, CircularOne. In the new portal at [www.schuetz-ticket-service.net](http://www.schuetz-ticket-service.net), all our services can be found in one central location. Customers can submit country-specific and individual enquiries and experience a comprehensive circular economy conveniently and transparently from a single source.

ENGINEERED FOR  
EXCELLENCE



CIRCULAR BY DESIGN

CLOSING  
THE LOOP  
TOGETHER

### Experience SCHÜTZ at interpack

At interpack 2026, SCHÜTZ will be exhibiting in Hall 10 (Booth D22 | E34) with a comprehensive show concept. Spanning over 500 square metres across two levels, the display area offers the ideal setting for professional dialogue in a relaxed atmosphere. Large-format LED walls illustrate technical details and the latest product innovations through high-quality anima-

tions, and numerous exhibits from the IBC, PE, steel drum and jerrycan portfolios bring the solutions to life. The focus of the booth is on personal interaction: **as always, our team is on hand to provide detailed insights into the entire product portfolio, new solutions, CircularOne and the comprehensive circular economy.**



**SCHÜTZ  
TICKET SERVICE**



**CIRCULAR ONE**

**SCHÜTZ's new,  
all-in-one solution  
for highly efficient  
packaging cycles**



**CIRCULAR**  
**ONE** THE COMPLETE  
PACKAGING SOLUTION.

The demand for a sustainable and efficient packaging supply chain is constantly increasing. This is why we are introducing CircularOne, a new, comprehensive circular service that brings together all services on a single platform: return, reuse, reconditioning, recycling and the supply of new and reconditioned industrial packaging. The integration of this service into customisable open or closed-loop systems guarantees “one-stop convenience”, maximum planning and delivery reliability, and genuine efficiency.



# SCHÜTZ TICKET SERVICE

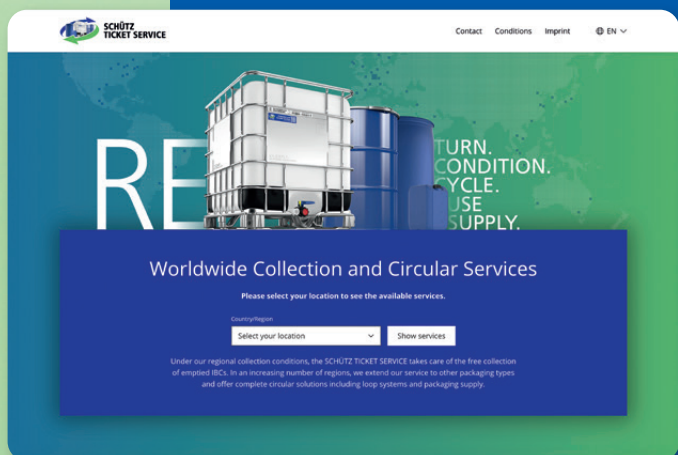


**E**nterprises that manage global supply chains face a wide range of challenges. New legal requirements, such as the EU Packaging Regulation (PPWR), the need for greater resource efficiency, and the increasing complexity of worldwide chains are constantly putting pressure on costs, quality and compliance. There is a genuine need for solutions that meet economic, environmental and regulatory requirements in equal measure. We have been pursuing this approach since the 1970s and now, with CircularOne, have expanded our circular strategy, developed over many years, to form an integrated system solution.

## One order – for all packaging in the cycle

Our proven SCHÜTZ TICKET SERVICE offers an easy, centralised entry point into the material cycle. Alongside the global standard – the collection and reconditioning of emptied IBCs, in an increasing number of countries our customers can now also return steel and plastic drums and jerrycans. This enables them to organise the collection of all their empty industrial packaging with a single collection order. We are continuously expanding our global network through the integration of leading local reconditioners, initially across Europe, with other continents to follow.

The new portal can be accessed at [www.schuetz-ticket-service.net](http://www.schuetz-ticket-service.net). Here, users can find all our available services in one place and submit country-specific and individual enquiries.



Regardless of the manufacturer, we offer a collection service in many countries for:



We are continuously expanding our global network through the integration of leading local reconditioners, initially across Europe, with other continents to follow.



**IBC:** Our global standard service



**Steel and PE drums:** Expert recycling



**Jerrycans:** Efficient solutions, even for small packaging units



### State-of-the-art reconditioning and recycling

For the subsequent treatment of the returned packaging, we apply the best state-of-the-art processes depending on the packaging type – ranging from IBC rebotting and professional washing processes to the complete reconditioning of steel drums, including recoating.

Plastic packaging and components that cannot be reused are sent to advanced recycling centres. Here they are processed to make top-quality HDPE recyclate, which flows back into the cycle, for example, as regranulate for our resource-saving GREEN LAYER packaging.



Tested and certified quality

In GREEN LAYER containers	<p>RecyClass</p> <p><b>30%</b></p> <p><b>RECYCLED PLASTIC</b></p>
Controlled and certified processes	<p>RecyClass</p> <p><b>RECYCLING PROCESS</b></p> <p>EN 15343</p>



# Customised circular models for every supply chain

CircularOne brings together every step of the process, from return logistics to high-quality recycling. To ensure these services can be easily integrated into individual supply chains, we offer two customised circular models.



## SCHÜTZ Open Loop Service

The SCHÜTZ Open Loop Service provides a smart balance between your packaging returns and your packaging requirements. Your empty packaging may often differ in type and specification from your current requirements and is only of limited suitability for direct reuse within the circular system. **In our unrivalled global network we transform your heterogeneous return flows into an individually defined, homogeneous delivery and packaging portfolio using state-of-the-art reconditioning and recycling processes.** You receive guaranteed deliveries of reconditioned packaging or new packaging containing recycled material (GREEN LAYER) based on clear service agreements – for a high degree of planning and supply security.

### INBOUND

Delivery of different types of packaging with varying specifications



Transformation through global reconditioning and recycling



### OUTBOUND

A portfolio tailored to the customer's needs, with consistent quality and specifications



## SCHÜTZ Closed Loop Service

The SCHÜTZ Closed Loop Service focuses on preserving the value of your packaging inventory. As your loop partner, we handle the efficient collection and reconditioning of your packaging portfolio for reuse within a closed-loop system. **This service is particularly suitable for companies with regularly occurring, large and homogeneous volumes of packaging which can be handled in full truck loads.** The packaging is collected by the SCHÜTZ TICKET SERVICE and is reconditioned to the very highest standards in our nearby service centre. Subsequently, we ship you the same quantity of the same types of packaging. Packaging that is unsuitable for reconditioning can, on request, be replaced with new or alternative reconditioned packaging.

### INBOUND

Homogeneous return portfolio



Protecting value through local reconditioning



### OUTBOUND

Original packaging, reconditioned for reuse

# All services on a single website

To make packaging management as efficient as possible, we have consolidated all our services on the new platform [www.schuetz-ticket-service.net](http://www.schuetz-ticket-service.net). Through this web portal, customers can order collections, circular economy services, or deliveries dynamically and based on location with just a few clicks.



## Select your location and the service you require



### Collection Service

Request the collection of emptied packaging directly from your site.



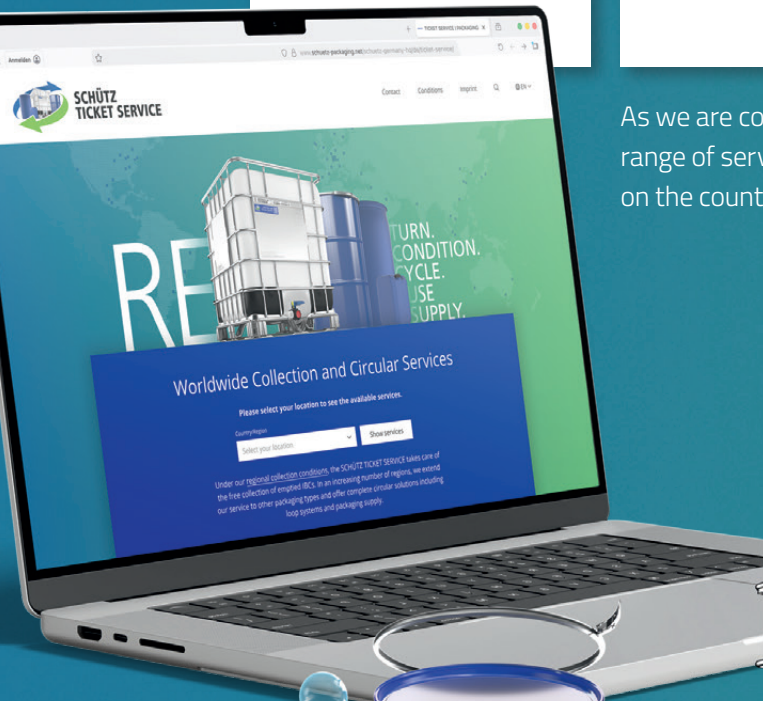
### Reconditioning Service

Have your packaging washed, rebottled or reconditioned for reuse.



### Packaging Supply

New, with recyclate or reconditioned - receive packaging from our full portfolio.



As we are constantly expanding our global network and range of services, the services available vary depending on the country and region.



# www.schuetz-ticket-service.net

**THE GREAT ADVANTAGE** is that we offer a single point of access for all locations and packaging types.



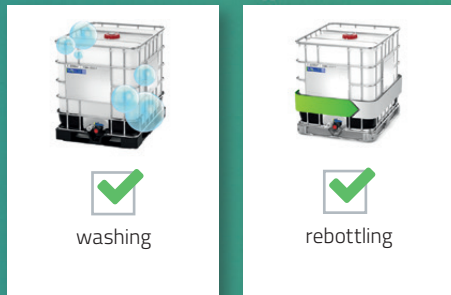
## Collection service – example



With our globally established IBC collection service, we have been setting the standard for decades. We are now extending this service to include drums and jerrycans in an increasing number of regions.



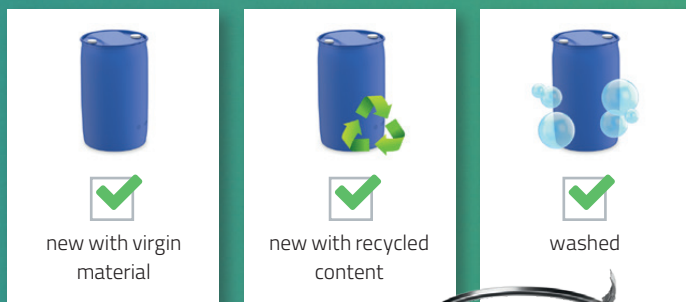
## Reconditioning service – example



In addition to global IBC rebottling, we offer country-specific services such as the professional cleaning of packaging – or the complete reconditioning of steel drums, including dent removal and repainting.



## Packaging supply – example



With or without packaging returns, we offer customised solutions to help you meet your economic and environmental goals.



1

SCHÜTZ Container Systems, Inc.  
USA – KENOSHA



4

VATEN / EMBALLAGE / HANDEL  
JAGER & ZN. B.V.

NETHERLANDS – 2 LOCATIONS



5

SCANDRUMS

SWEDEN – KUNGSBACKA  
DENMARK – SONDRERSO



2



USA – POSEN



6

Gie®  
GESTIÓN INTEGRAL  
DE ENVASES  
INDUSTRIALES

SPAIN – GUADALAJARA



7



FRANCE – 5 LOCATIONS



3

SCHÜTZ ELSA, S.A. de C.V.  
MEXICO – PESQUERÍA



8



SAUDI ARABIA – AL JUBAIL

New production site

New service location



SCHÜTZ Container Systems Pvt. Ltd.  
INDIA – DAHEJ



SCHÜTZ Vietnam Company Limited  
VIETNAM – PHÚ MY

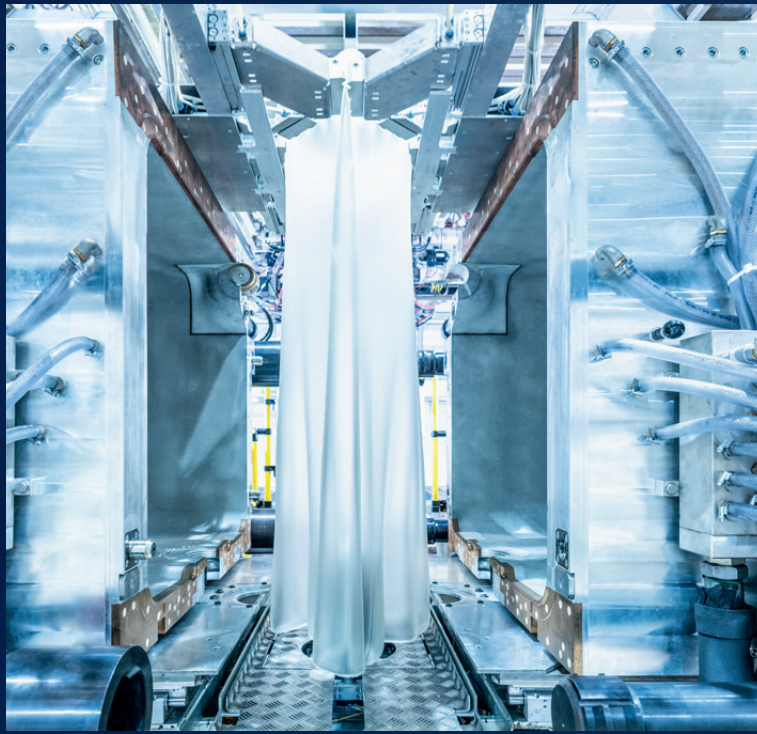
# Circular Economy meets Technology: **Consistently expanding our global presence**

To be able to deliver the highest level of technological performance and put the circular economy into practice for our customers, we depend on a strong, global network. By opening new production and service sites and strategically integrating leading specialists in packaging reconditioning, we can offer new benefits in many regions: shorter transport routes, a measurably improved carbon footprint, and customised, local solutions for the entire life cycle of industrial packaging – from reliable supply to safe collections.



CONTAINERSAVE  
DRUMSAVERS

AUSTRALIA – MELBOURNE



### New production sites: SCHÜTZ is driving intercontinental growth

Each of our new production sites is chosen with a clear objective in mind: maximum proximity to our customers. In the USA, we have achieved this with our new 34,000-square-metre plant in **Kenosha, Wisconsin**. As well as manufacturing IBCs and plastic drums for the Midwest, in autumn 2025 we expanded the site to include our own reconditioning facility. In Mexico, at our modern site in **Pesqueria**, we are combining steel drum and fibre drum production for the first time, enabling us to supply the north of the country with significantly shorter routes.

In Asia, too, our production capacity continues to grow: since 2024, we have been manufacturing IBCs and plastic open-head drums in **Dahej, India**, which means significantly reduced logistics costs and CO<sub>2</sub> savings for local customers. We also offer F2 drums here, which feature an additional handling ring for manual handling. In **Phú My, Vietnam**, a further site for IBCs and PE drums will open in the second quarter of 2026. A newly constructed

Each of our new production sites is chosen with a clear objective in mind: maximum proximity to our customers.

SCHÜTZ steel service centre will also ensure the supply of steel components across the region. Together with our partner **National Plastic Factory (NPF)**, we are further strengthening our network in **Saudi Arabia**. A newly planned plant in Al Jubail will ensure significantly shorter delivery times and further improve supply security in the Gulf region.



### Expanding our reconditioning expertise

In Europe alone, we have recently expanded our network by adding 28 reconditioning sites. To achieve this, we are strategically integrating reconditioning experts around the world who for decades have been successfully established in their markets. This includes long-standing partnerships – such as with **DUO Emballages in France** or **Remitack in Belgium** – and the acquisition of **Jager & Zn. B.V. (Netherlands)**. In **Scandinavia**, our majority stake in **ScanDrums** ensures a full-service offering from a single source, whilst on the Iberian Peninsula we are expanding our presence through a joint venture with **Gestión Integral de Envases (GIE)**.

We are also building our network on other continents: in the **USA**, our increased stake in our long-standing partner **Fibre Drum Sales (FDS)** boosts recycling capacity in the Chicago area. In **Australia**, **ContainerSave** and **DrumSavers** are expanding our service and recycling network in the Melbourne region.

### The bottom line: a closed-loop system

All new openings, partnerships and acquisitions serve an overarching goal: to cover the entire packaging cycle locally and efficiently within our own network. We focus this strength in our integrated packaging service offering, encompassing reliable supply, collection and reconditioning from a single source.

**In Europe alone, we have recently expanded our network by adding 28 reconditioning sites.**

More variety, more flexibility:

# SCHÜTZ is strategically expanding its jerrycan range

Any company supplying packaging to different markets and industries needs to continuously develop and expand their product range. By making targeted additions to our range of jerrycans, we are creating new opportunities without abandoning our tried and tested versions. Modified geometries, additional volume options and a consistent multi-layer construction with up to six layers make the new SC2 jerrycans a versatile solution for both the European and North American markets.



5 litres

6 litres

10 litres

11 litres

**T**oday's jerrycans need to offer even better performance than ever before – in the food industry as well as in the chemical and agricultural sectors. To meet these requirements as effectively as possible, we have developed the new SC2 jerrycan series. It follows on perfectly from the successful SC1 range and represents the next step for us in bringing together advanced technology and the circular economy.

**The difference is immediately apparent from the exterior: the SC2 jerrycans feature a smooth, dimensionally stable surface without the ribbed edges of the previous model. This creates a larger labelling area while optimising material usage.** All of the positive features of the SC1 series are retained, such as form-fitting stackability thanks to the precise match between the top and bottom surface.

### Different sizes for different markets

In addition to the established SC1 containers, which remain available as a reliable UN standard for numerous applications, the SC2 series includes further intermediate sizes with packaging volumes of 6, 11, 12, 22.5 and 27.5 litres. For North America, the jerrycans are also available in the US-standard 5 and 6-gallon sizes. We have developed the F-Style jerrycan with a 2.5-gallon capacity specifically to meet the requirements of the American agricultural sector: it features a raised recessed handle for optimum handling and a new geometry that is distinct from the SC1 and SC2 ranges.

**We have developed the F-Style jerrycan with a 2.5-gallon capacity specifically to meet the requirements of the American agricultural sector.**



### Three to six layers for the highest protection

Our highly automated production lines at our centre of excellence in Selters ensure the highest manufacturing quality. As standard, we use a 3-layer extrusion blow-moulding process to make our jerrycans. For more challenging applications, a 6-layer variant is also available for jerrycan sizes 20, 22.5, 25, 27.5 and 30 litres, as well as for the F-Style jerrycan.

**This variant includes a high-performance EVOH barrier that reliably protects the contents from the permeation of gases and volatile substances, whilst also significantly extending the shelf life of sensitive and high-quality contents such as food additives or chemical products.**

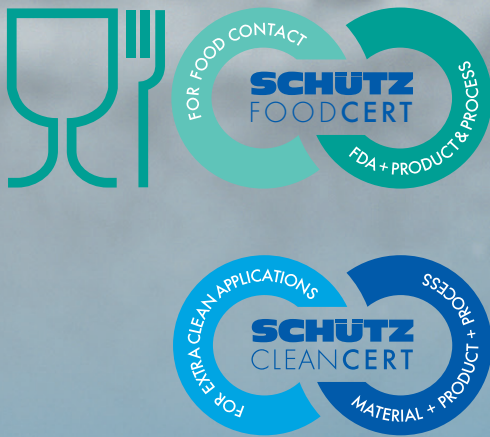
As a PFAS-free solution, the barrier is already designed to meet the requirements of future PFAS regulations.

**As a PFAS-free solution, the barrier is already designed to meet the requirements of future PFAS regulations.**



Both the 3-layer and 6-layer jerrycans are also available in a GREEN LAYER version, where high-quality SCHÜTZ regranulate is used in the middle layer. The inner and outer layers of the jerrycans are made entirely from virgin HDPE, ensuring that the contents and the environment come into contact exclusively with new material.

**GREEN LAYER packaging meets the same quality and safety requirements as conventional ranges, whilst making a significant contribution to resource conservation and sustainability.**



### FSSC certification for high purity requirements

The proven SCHÜTZ standards FOODCERT and CLEANCERT are available for applications with particularly high purity requirements. FOODCERT packaging is designed to meet the requirements of the food industry, whilst CLEANCERT variants comply with the highest standards of technical purity. Both versions are based on comprehensive FSSC 22000 system certification, which covers the end product, the materials used and the entire production process.



Contamination-free, sustainable, efficient

# The **SCHÜTZ IMPELLER** homogenises viscous products in closed IBCs

In practice, mixing viscous products thoroughly without opening the packaging presents a challenge for companies. Our SCHÜTZ IMPELLER single-use agitator solves this challenge easily. To cover as many applications as possible, we have two variants in our portfolio. With their consistent circularity, both are a perfect fit for this year's interpack trade fair motto "Circular Economy meets Technology".

**H**omogeneous mixing is crucial for consistent product quality when processing viscous liquids. Conventional stainless steel agitators require the transport container to be opened – a step that can allow foreign particles to enter and require time-consuming down-

stream cleaning procedures. Our SCHÜTZ IMPELLER eliminates these risks: the single-use agitator is integrated directly into the IBC at the factory, enabling sensitive contents to be stirred within the closed container. This reliably prevents the risk of contamination.

Foreign particles can enter when a transport container is opened, significantly compromising product quality – the SCHÜTZ IMPELLER completely eliminates this risk.

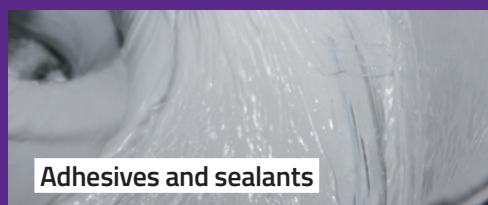


The IMPELLERS are available for all ECOBULK volumes from 560 to 1,250 litres and can be easily connected to existing agitator drives. The quality of the contents remains consistent throughout, from filling to discharge.

The SCHÜTZ IMPELLER is ideal for packaged products that need to be stirred or mixed before emptying, e.g.:



Paints and varnishes



Adhesives and sealants



Fertilisers and plant protection products



High-viscosity filling goods

## Two versions for different requirements

To handle a variety of applications, Schütz has developed two different blade profiles for the IMPELLER:

**The bucket agitator** is designed for powerful, uniform mixing and is particularly suitable for applications requiring intensive homogenisation.

**The blade agitator** was developed using Computational Fluid Dynamics (CFD) specifically for low-speed drives. The optimised blade profile ensures an even distribution of pigments and additives and enables the complete dissolution of sediments even at low stirring speeds. Material losses are reduced to a minimum.



## Part of a closed cycle

Both versions are made from 100% recycled plastic. After use, they are returned together with the IBC via the SCHÜTZ TICKET SERVICE and fully recycled. This means they fit seamlessly into our Circular-by-Design approach – as part of a closed-loop system that reduces waste, conserves resources and, at the same time, contributes to generating high-quality recycle.

Optimal force distribution,  
designed for automated logistics

# 3-skid steel pallet goes into series production

Automated logistics processes, heavy loads, high-bay warehouses: the demands placed on IBC pallets have increased significantly in recent years. Our new 3-skid steel pallet provides a solution that combines stability, process reliability and cost-effectiveness. From the third quarter of this year, the pallet – developed specifically to meet these requirements – is set to go into series production, offering a cost-effective alternative to heavy specialist wooden and plastic skid pallets.



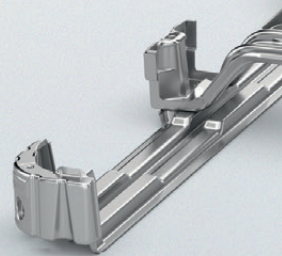
**M**odern warehousing and logistics environments place high demands on IBC pallets. In high-bay warehouses, on conveyor belts and roller systems, and when used with heavy, high-density goods, even load distribution, minimal deflection and reliable sliding properties are essential. This is precisely what we designed our new 3-skid steel pallet for. The new pallet perfectly ties in with our focus for interpack 2026. Under the motto “Circular Economy meets Technology”, we are focusing on the durability and reusability of our products to further optimise their economic and ecological efficiency.

## Three skids for significantly more contact area

The key difference compared to conventional steel skid pallets lies in the significantly wider side skids and the additional central skid. Together, they ensure optimal force distribution and minimise deflection.

**Compared to classic steel-frame pallets, the contact area is increased by around 900 per cent, ground pressure is significantly reduced, and the load is distributed evenly.**

This makes the pallet particularly suitable for heavy, high-density goods and for use in high-bay warehouses.



## Smooth transport on conveyor systems

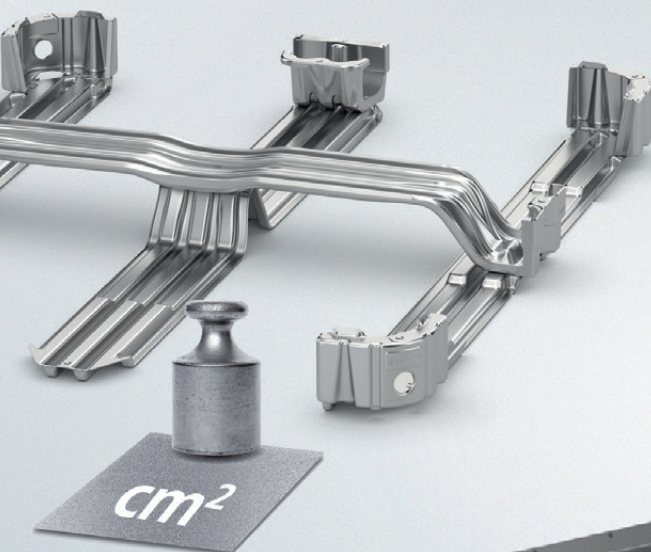
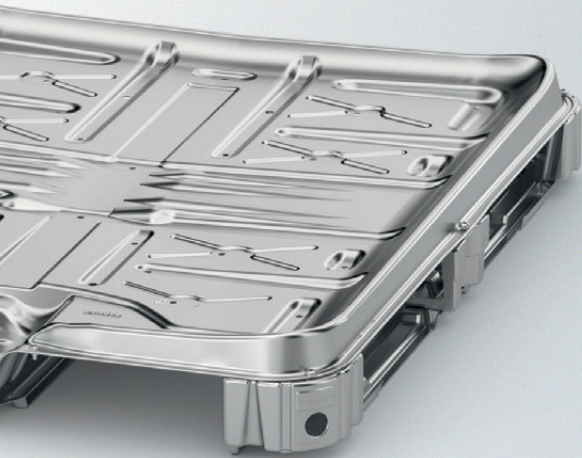
Thanks to the large, flat contact area, the pallet is ideal for transport on conveyor systems and offers smooth running as well as excellent rolling properties on roller conveyors. The embossed steel skids with a ribbed design significantly increase the pallet's resistance to sagging and deformation. The pallet can be accessed from all sides and features lowered skid edges to facilitate side entry, ensuring easy handling with forklift trucks and hand pallet trucks in day-to-day operations.

## Cost-effective and robust

The 3-skid steel pallet offers the same performance as heavy-duty wooden pallets or plastic skid pallets – at a significantly lower cost and with the environmental benefit of a long service life within a circular system.

**The 3-skid steel pallet is an example of how we are constantly improving our components – always with the aim of meeting the demands of modern logistics processes and delivering economic and environmental benefits for users.** The fact that this development work never stops is also evident in our new bottom group, which provides even greater protection for our steel pallets against deformation caused by forklift handling.

**Thanks to the large, flat contact area, the pallet is ideal for transport on conveyor systems and offers smooth running as well as excellent rolling properties on roller conveyors.**

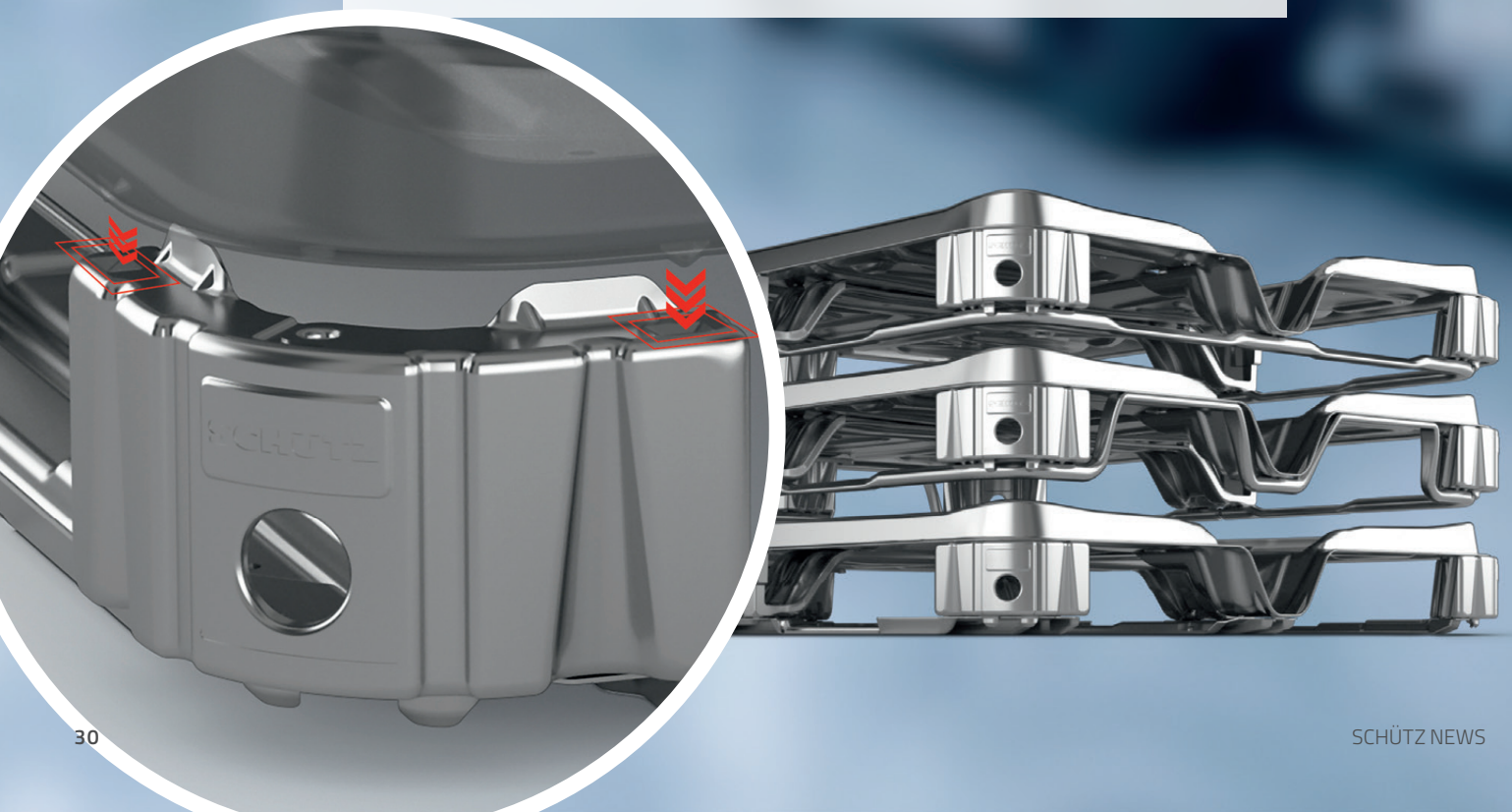


Systematic new features increase durability and robustness

# Better protection during forklift operation

## A new composite solution for steel pallet bottom groups

Pallets are exposed to significant wear and tear during daily handling with forklift trucks. Over time, this can cause severe deformation, for example when the corners are subjected to improper handling. We have addressed this challenge by further developing the bottom assembly of our steel pallets: both the corner feet and the supporting bottom plate have been fitted with interlocking cams that prevent deformation, extend the service life of the pallets and enable more use cycles.



**R**epeated improper handling when positioning IBCs with a forklift truck places heavy stress on the corners of the pallets during daily use and can lead to deformation – with significant consequences for stability, handling and service life. To eliminate these effects, we have fundamentally optimised the bottom assembly of our steel pallets.

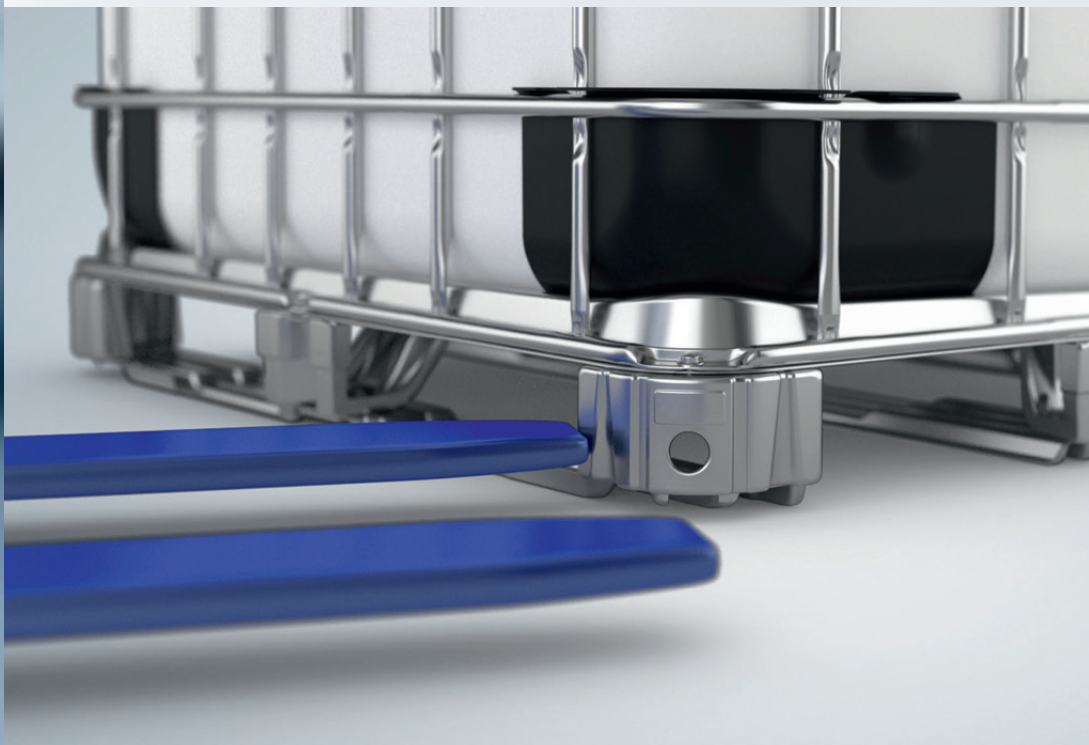
### Form-fitting locking mechanism with interlocking cams

At the heart of this new development is an integrated system comprising precisely matched locking lugs in the base tray and corner feet. **This form-fitting locking mechanism ensures that the corner feet are held securely in place, even during heavy-duty forklift operation. The risk of deformation during alignment is significantly reduced.** The result is a pallet unit that has greater resistance to deformation and increased overall stability.

This also pays off both economically and environmentally: more robust pallets can withstand more cycles before they need to be replaced. The longer a pallet remains in circulation, the more material and CO<sub>2</sub> it saves.

### New global standard for the steel pallet portfolio

The optimised bottom group with twist-resistant corner feet is not a one-off solution, but a new, global SCHÜTZ standard. This new development will be presented for the first time at interpack 2026. The new form-fit locking mechanism between the bottom plate and corner feet further enhances the robustness and durability of all steel pallet variants. The new compound solution is being rolled out across our entire steel pallet portfolio and represents our new global standard for greater impact protection in daily forklift use.



Double fire protection, easy handling:

# Our new IBC for sensitive products

Flammable liquids, hazardous goods, Ex zones: not every requirement can be met with a standard IBC. SCHÜTZ's ECOBULK SX-D was developed precisely for these special cases. The double-walled construction, comprising an HDPE inner bottle and a sealed steel shell, offers maximum protection against fire and leakage – FM Global certified and tried and tested in practice. At Interpack 2026, we will also be presenting the new SX-D-OV variant, which is now going into series production and extends this safety concept to include the convenience of discharge from below.

*The HDPE inner bottle is enclosed inside a fully sealed, fire-resistant steel shell. In the event of a fire, this acts as an integrated containment tray and reliably prevents the contents from leaking, even under extreme conditions.*



## SX-D-OV

**T**he transport and storage of flammable hazardous liquids is among the greatest challenges in packaging management. In production environments, in hazardous areas as a rule, or during the road transport of sensitive goods – in an emergency every second counts. Where a conventional plastic IBC reaches its limits, our ECOBULK SX-D sets new standards: as a double-walled container that combines the efficiency of an IBC system with the level of protection previously only offered by steel drums.

### The systematic design provides high protection in a fire

What makes the ECOBULK SX-D unique is its design: the HDPE inner bottle is enclosed inside a fully sealed, fire-resistant steel shell. In the event of a fire, this acts as an integrated containment tray and reliably prevents the contents from leaking, even under extreme conditions. A welded joint between the bottom plate and the outer shell gives the combination IBC exceptional stability. Thanks to its double-walled construction, the ECOBULK SX-D reduces fire hazards in storage and production environments and, in an emergency, buys valuable time for firefighting and safety measures.



### Certified to meet the most demanding requirements

Country-specific safety guidelines for handling flammable liquids require a solution that covers all eventualities. The ECOBULK SX-D is the first combination IBC to be certified by FM Global ("FM Approved"), and it also meets the requirements of UL Standard 2368 and is approved for use in Zone 1 and 2 hazardous areas. It also effortlessly meets the requirements for sensitive Class 6.1 hazardous liquids. This makes it suitable for applications where previously only steel drums could provide the necessary protection, while at the same time offering the superior efficiency of the IBC system. Another practical advantage is that the use of the certified container has a positive impact on insurance terms.



### New variant: discharge from below with no compromises on fire safety

At interpack 2026, we are introducing the ECOBULK SX-D-OV, a variant of our combination IBC that complements the proven safety concept by adding a feature that makes handling more convenient: the contents can be discharged from below. A steel lid that opens without tools provides access to an integrated discharge valve, enabling the familiar handling just

like a standard IBC. For maximum safety in the event of a fire, the outlet area is additionally protected by a heat shield. Once the lid is closed, the SX-D-OV offers complete fire and leakage protection. Series production of the new variant will start in August 2026.

# A systematic approach to steel

Efficient load securing and a wide choice of steel drums for challenging contents



Whether you're dealing with corrosive substances or highly permeable contents, steel drums need to be suitable for a wide range of applications. We address this need for diversity with a customised range of open-head and closed-head drums, as well as the SCHÜTZ DRUMFIX load-securing system, which is fully integrated into our circular economy.



## Purity through process simplification: the Laser Drum requires no downstream processing.

**A**s a time-tested material for industrial packaging, steel must meet high standards in terms of safety, hygiene and transport efficiency. Whether our customers are dealing with corrosive substances, viscous contents or applications with stringent requirements for hygiene, safety or transport efficiency – we offer the right solution for every application

### The Laser Drum: protection starts with the raw material

The SCHÜTZ Laser Drum is ideal for applications involving particularly sensitive or corrosion-prone contents. It is manufactured directly from the coil using sheet steel that is hot-dip galvanised on both sides. **This process ensures an evenly distributed zinc coating that protects the entire drum body against corrosion.** As no subsequent painting or furnace treatment is required, potential sources of faults such as paint drips, inclusions, cratering or residues – all of which can pose a contamination risk – are eliminated. **By avoiding post-treatment processes, internal**

**transport operations are reduced, saving time, energy and costs.** The Laser Drum is a robust and clean solution for sensitive or corrosion-prone contents and also makes a substantial contribution to achieving sustainability goals.

### The Combi Steel Drum: two materials, one system

For applications involving highly permeable or corrosive products, the Combi Steel Drum – a solution featuring dual-layer protection – is the ideal choice. It combines a steel drum with a plastic liner. The design, comprising a painted steel shell and an integrated inner liner made of high-quality HDPE, offers several advantages: the outer steel shell reliably prevents permeation through the drum wall, whilst the contents come into contact exclusively with the plastic inner liner, ruling out corrosion. Thanks to the steel shell, the drum is extremely stable and particularly suitable for sensitive processes such as hot filling, as there is no risk of the packaging collapsing after filling.

**An unbeatable combination:  
steel stops permeation,  
plastic prevents corrosion.**

## The Combi Laser Drum for flexible demands

The Combi Laser Drum is the logical next step, combining the advantages of both systems: the HDPE inner liner of the Combi Steel Drum and the fully galvanized outer shell of the Laser Drum. **This combination makes it suitable for use in applications requiring high purity and comprehensive protection against corrosion, permeation and leakage.**



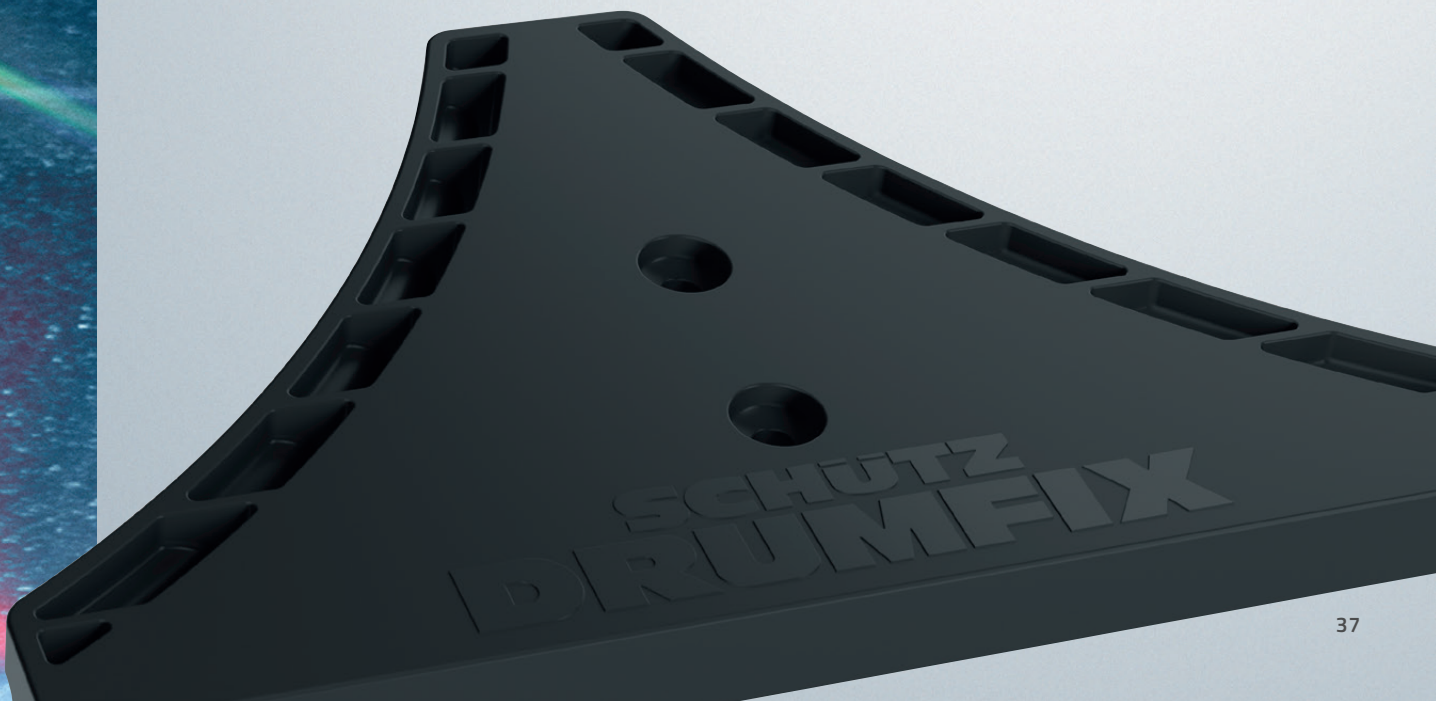
## SCHÜTZ DRUMFIX – load securing as part of the circular system

To complement our drum range, we offer SCHÜTZ DRUMFIX, a reliable, resource-efficient system for securing steel drums during transport. **This system enables four drums to be quickly and securely joined together on a pallet to form a stable load unit.** To do this, the DRUMFIX elements are attached to the pallet using special screws and sit over the lower flange of the drums. Two additional straps secure the unit at the top and bottom, ensuring that the drums remain firmly fixed even under extreme test conditions, such as tilting the pallet at an angle of up to 45 degrees.

DRUMFIX is sustainable in two ways: the components are made from recycled SCHÜTZ packaging and, after use, can be returned via the SCHÜTZ TICKET SERVICE for reuse. Stretch film, tension straps or metal holders are no longer needed. The result: less packaging waste, lower costs.



**With DRUMFIX, we are replacing conventional single-use materials with a reusable solution from our own recycling loop.**



Proven millions of times, continuously developed:

# GREEN LAYER technology for all plastic packaging

Following on from our IBCs and PE drums, our new range of jerrycans now also features the technological excellence and performance of the SCHÜTZ GREEN LAYER design: since 2024, we have been incorporating high-quality regranulate from our own recycling process into the middle layer of our 3- to 6-layer packaging. This enables us to considerably reduce our carbon footprint. The quality and safety standards, as well as the hazardous goods approvals for the GREEN LAYER variants, are uncompromisingly equivalent to those of the corresponding packaging made from virgin material.



**S**ince the start of series production, GREEN LAYER technology has proven itself to be a powerful player in daily operations in many applications. IBC inner bottles and PE drums in this resource-efficient design are now an integral part of our portfolio and are used by customers across a wide range of industries. With the launch of GREEN LAYER jerrycans at interpack 2026, we are closing the loop by also offering packaging solutions that use recycled material for smaller volumes of 5 to 30 litres. Furthermore, SCHÜTZ GREEN LAYER solutions are already ready to meet the requirements of the European Packaging and Packaging Waste Regulation (PPWR), which will mandate a minimum proportion of recycled content in plastic packaging from 2030.

*With the launch of GREEN LAYER jerrycans at interpack 2026, we are closing the loop by also offering packaging solutions that use recycled material for smaller volumes of 5 to 30 litres.*



## More sustainability, no compromises

GREEN LAYER technology is based on our multi-layer extrusion process, which we use to manufacture all SCHÜTZ plastic packaging with a standard of at least three layers and as many as six. They become GREEN LAYER containers by adding high-quality SCHÜTZ regranulate to the middle layer of the container, bringing the proportion of recycled material to 30%. As the inner and outer layers of the containers are still made entirely of virgin HDPE, the contents and the environment come into contact exclusively with new material.

A key feature of our GREEN LAYER packaging is that the use of recycled material does not compromise safety or quality. It meets the same requirements as the corresponding non-recycled product ranges, including approvals for the transport of dangerous goods. This is what makes the switch so easy: **customers who already use our new packaging can use the equivalent SCHÜTZ GREEN LAYER products – without any lengthy internal approval processes!** And opting for an all-plastic pallet with a GREEN LAYER IBC increases the total proportion of recycled plastic in the packaging to as much as 68 per cent.

## Regranulate from our own recycling processes

For the SCHÜTZ GREEN LAYER series, we use only recycled material that we produce ourselves, thereby retaining full control over its origin and quality. To this end, used packaging from around the world is returned via the SCHÜTZ TICKET SERVICE and processed in our own recycling centres into high-quality, odourless and natural-coloured regranulate. This is then fed back into the production of new GREEN LAYER packaging in a controlled process. In this way, we create stable material flows that combine ecological and economic efficiency and ensure the long-term availability of high-quality recycled materials.





**SCHÜTZ**  
GREEN LAYER TECHNOLOGY



**HIGH-QUALITY  
RECYCLED PLASTIC**

## *Ready for the PPWR 2030 directive*

Thanks to the multi-layer structure of our plastic packaging, we have the technical foundation to further increase the recycled content. This is a key advantage that will allow our customers to continue to use our GREEN LAYER products in the future without lengthy approval processes when the European Packaging and Packaging Waste Regulation (PPWR) requires a minimum of 35 per cent post-consumer recycled content for the majority of plastic packaging as from 1 January 2030.



*Customers who already use our new packaging can use the equivalent SCHÜTZ GREEN LAYER products – without any lengthy internal approval processes!*

SCHÜTZ invests in a state-of-the-art IBC production facility at BASF's main plant

**BASF**  
We create chemistry

# On-Site, just in time

## Our foundation:

*A global network, built up over decades and comprising more than 80 production and service sites and over 8,000 employees. The new facility in Ludwigshafen is the logical next step on this journey.*



BASF Ludwigshafen site

**BASF has relied on SCHÜTZ for its industrial packaging needs since the 1960s. Major milestones in this partnership include the joint development of the world's first IBC. Now we are celebrating the next phase of our cooperation: in March 2026, we signed a site agreement for the construction of a highly automated IBC production and storage facility directly adjacent to BASF's main plant in Ludwigshafen.**

**T**his is a partnership that we are rightly proud of! We have been working closely with BASF since the 1960s. Together, we shaped an innovation that goes far beyond the partnership between BASF and SCHÜTZ: we developed the intermediate bulk container together in the 1970s, a product that remains the global standard to this day. With a new SCHÜTZ site located directly at BASF's main plant, we are now integrating our infrastructure and logistics processes.

### As close as it gets

The planned facility will include production and storage spaces and will be located on a site directly on the outskirts of the BASF multi-site complex in Ludwigshafen. The centrepiece will be a state-of-the-art, fully automated IBC production plant complemented by a digitalised packaging materials warehouse directly connected to production. The result: 24/7 just-in-time delivery for BASF, with the shortest possible transport routes – and a supply concept that is unique in this form. Construction is scheduled to begin in the third quarter of 2026.

*“By establishing SCHÜTZ in the immediate vicinity of our complex, we are ensuring the highest possible level of supply security for the site. This close proximity and integration enables us to keep transport distances short and respond flexibly, around the clock, to changing requirements in our production facilities and plants.”*

Uwe Lohr, Senior Vice President Global Indirect Procurement, BASF SE

Naturally, we take the entire packaging cycle into account. In line with our Green Lifecycle Management approach, the further expansion of the reuse, reconditioning and recycling of used packaging containers is a cornerstone of the concept.

*“The strategic recruitment of long-standing partners and investment in local production capacities create significant structural advantages for our main plant. Integrating IBC manufacturing into our recycling and production cycles will strengthen our long-term competitiveness.”*

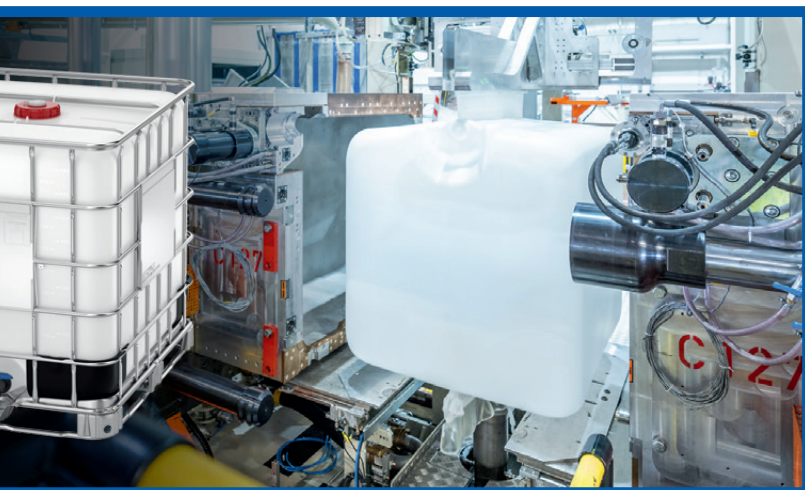
Helmut Winterling, President European Site & Verbund Management, BASF SE

### True partnership

This partnership demonstrates what sets SCHÜTZ apart as a company:

*“This project is not only a bold signal for sustainable site development, it also stands for highly efficient, customer-specific, on-site solutions and the further expansion of our role as a strategic partner to the industrial sector.”*

Roland Strassburger, CEO of the SCHÜTZ Group





CIRCULAR  
ECONOMY MEETS  
TECHNOLOGY

# Experience all our innovations at the show and online!

Product highlights and innovations  
on our website.



Experience our latest products not only in person at our stand, but also online on our website. We'll show you how cutting-edge technology and closed-loop material cycles work hand in hand to set new benchmarks in quality, safety and cost-effectiveness.



Discover all our latest products now:  
[www.schuetz.net/innovations](http://www.schuetz.net/innovations)